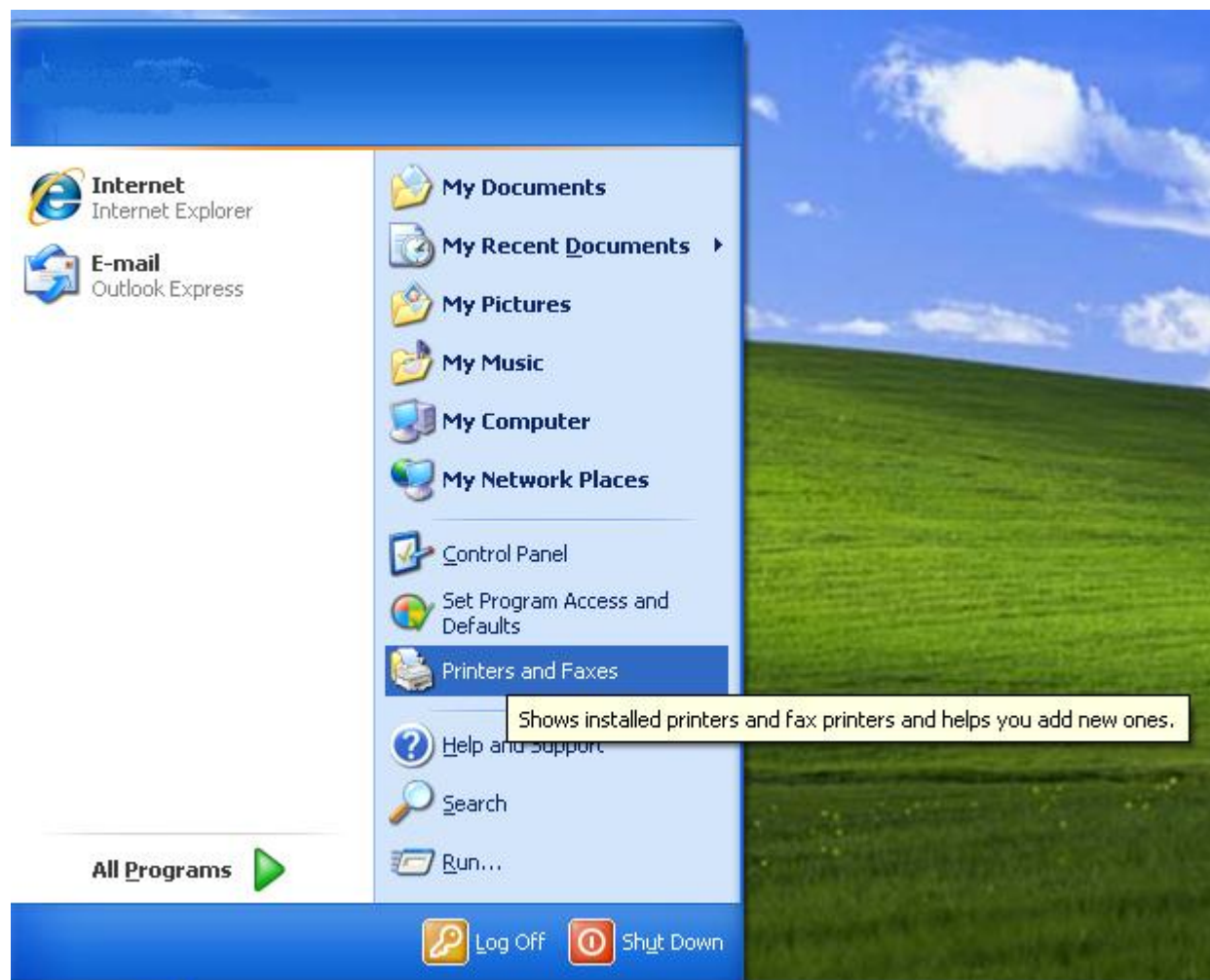
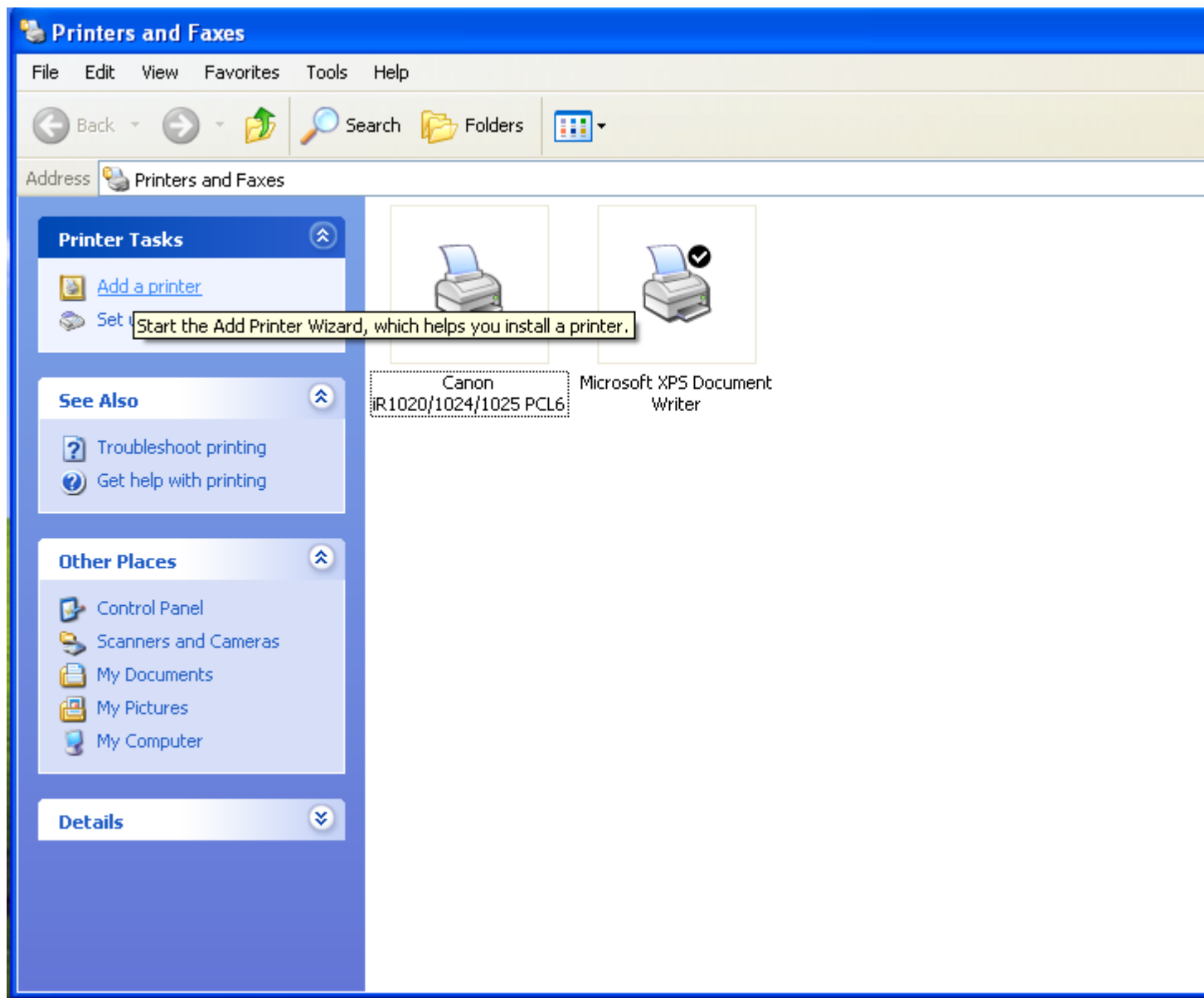


# Instalacija pisača „Generic/Text Only“ u Windows XP okruženju

U izborniku Start odaberemo Printers and Faxes:



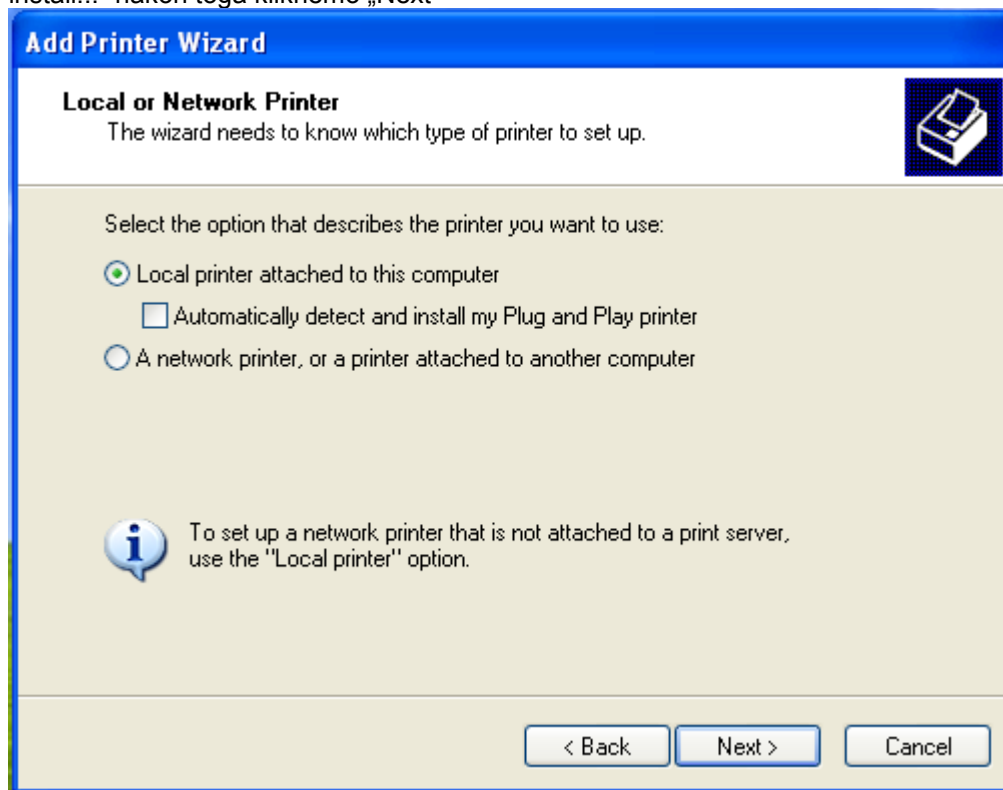
Na vrhu lijevog izbornika odaberemo Add a printer:



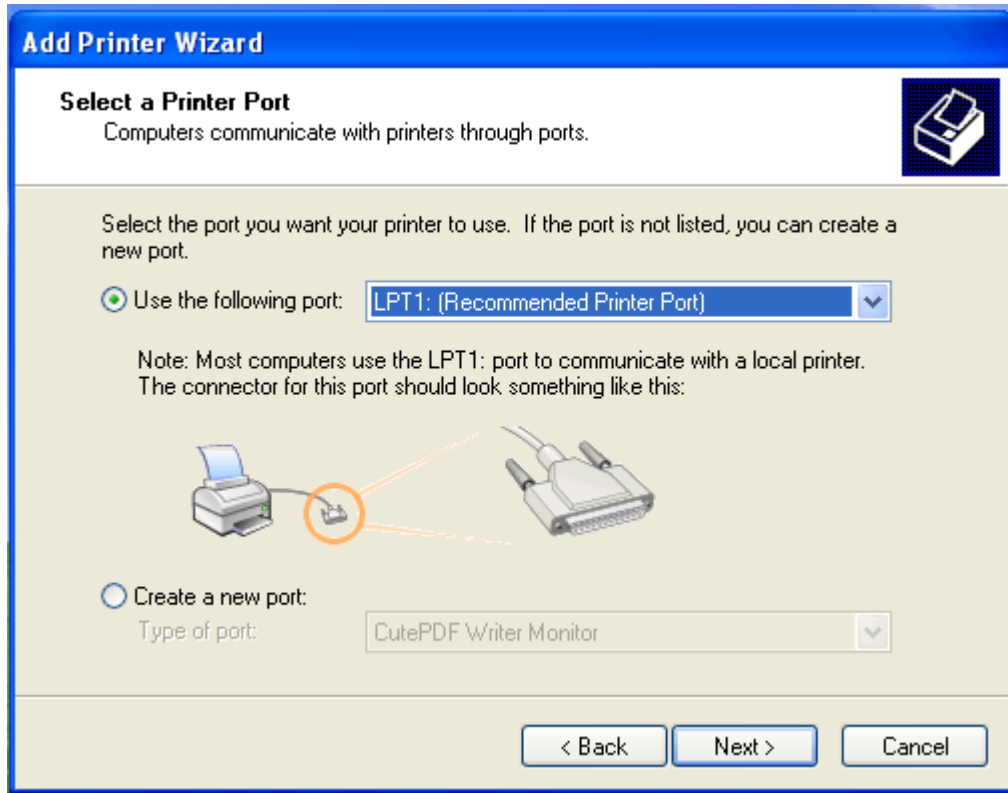
Pojavljuje se čarobnjak za instalaciju pisača na kojem kliknemo next:



Odaberemo „Local printer attached to this computer“ i **maknemo kvačicu** sa „Automatically detect and install...“ nakon toga kliknemo „Next“



Na ovom izborniku biramo port na koji je pisač spojen, pod Use the following port biramo ovisno o načinu priključenja pisača:



Portovi na računalu na koje se spaja printer i njihova oznaka:

LPT



COM



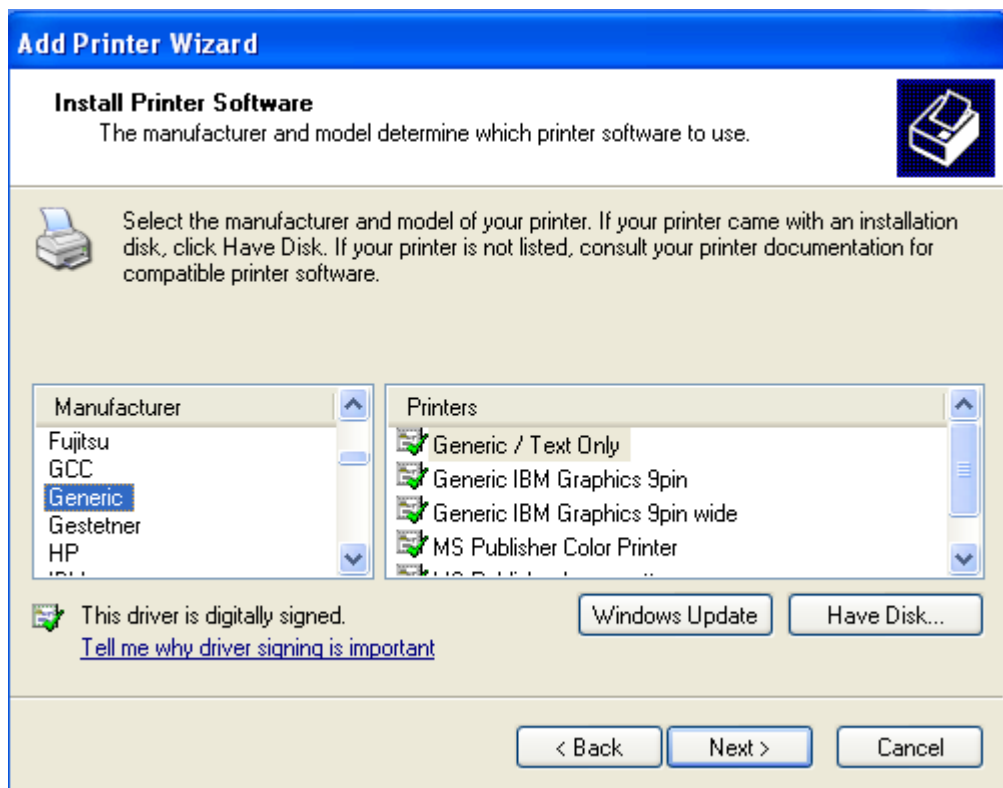
USB



Ovisno o načinu priključivanja printera na računalo moramo prilikom instalacije pisača odabrati vrstu priključka prema slikama i nazivima porta.

Nakon toga kliknemo na „Next“.


Na sljedećem ekranu odaberemo pod Manufacturer: Generic , a pod Printers: Generic/Text Only i kliknemo na „Next“.



Ostavimo zadani naziv pisača, odaberemo „Do you want to use this printer as the default printer?: No i kliknemo na „Next“:

**Add Printer Wizard**

**Name Your Printer**  
You must assign a name to this printer.



Type a name for this printer. Because some programs do not support printer and server name combinations of more than 31 characters, it is best to keep the name as short as possible.

Printer name:

Do you want to use this printer as the default printer?


Yes  
 No

< Back    Next >    Cancel

Do not share this printer, pa opet „Next“:

**Add Printer Wizard**

**Printer Sharing**  
You can share this printer with other network users.

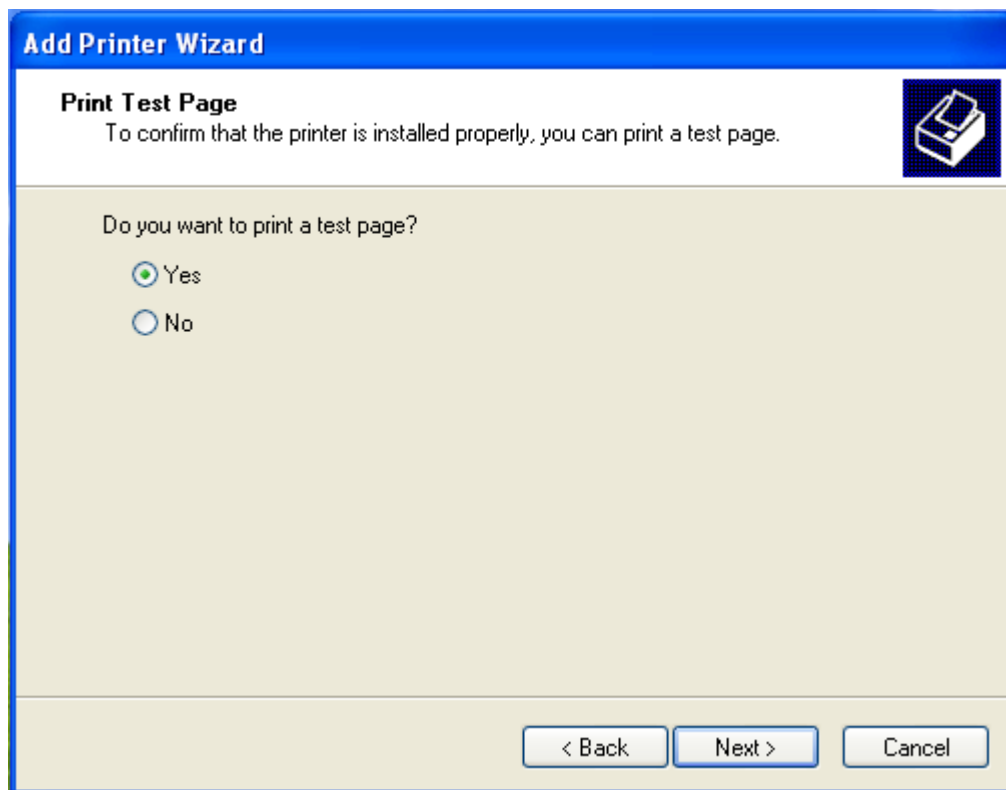


If you want to share this printer, you must provide a share name. You can use the suggested name or type a new one. The share name will be visible to other network users.

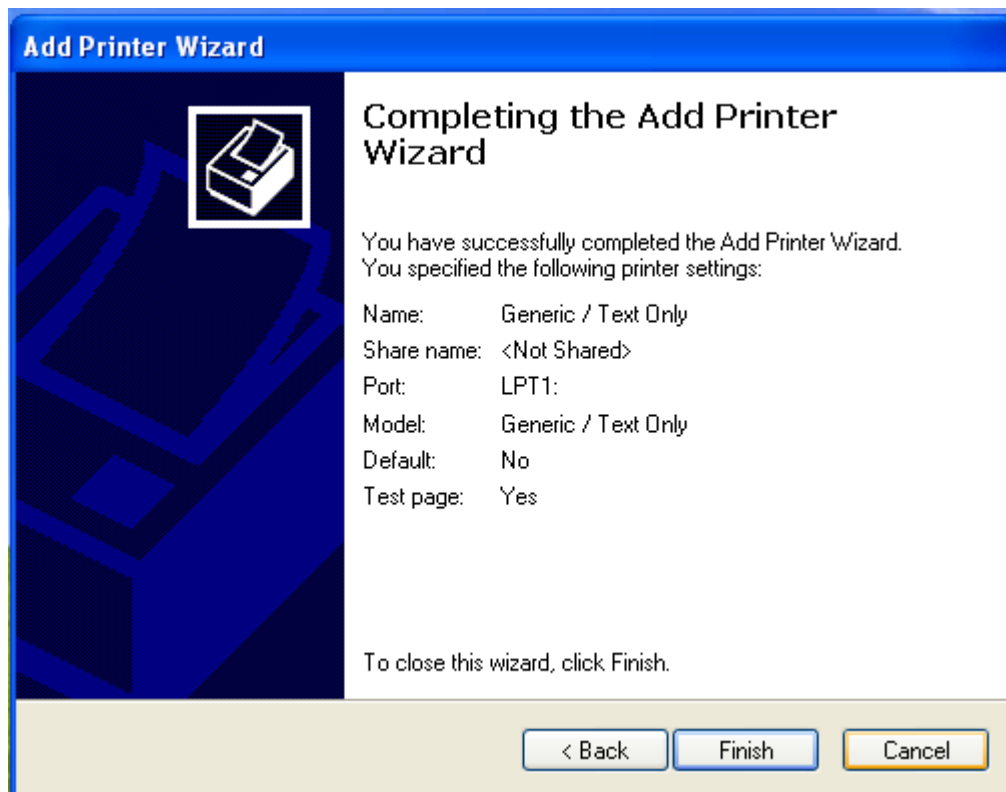
Do not share this printer  
 Share name:

< Back    Next >    Cancel

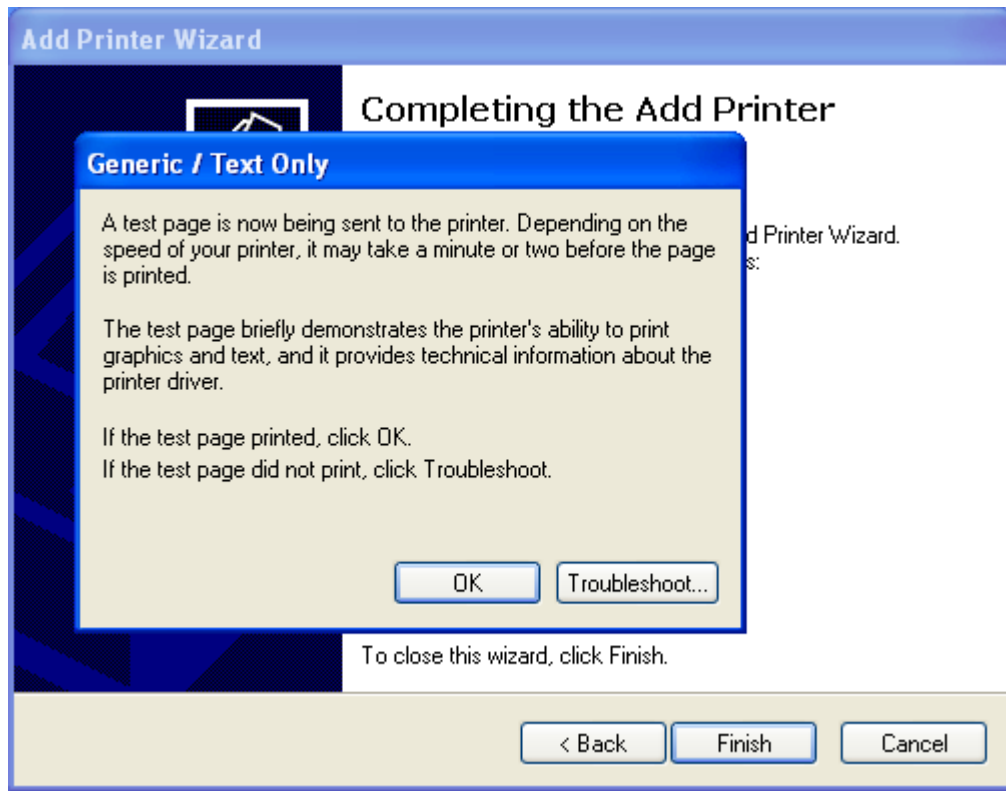
Do you want to print a test page?: Yes pa kliknemo na „Next“



Kliknemo na „Finish“:



Kliknemo na OK. Ukoliko je pisač ispisao testnu stranicu, znači da smo ga pravilno instalirali.



Ukoliko pisač ne ispiše testnu stranicu idemo na sljedeću proceduru:

-Dvoklik na pisač „Generic/text only“>pod izbornikom Printer maknemo kvačicu sa „Use printer offline“ ukoliko je postavljen. Ukoliko nema kvačice idemo na sljedeći korak.

-Desni klik na pisač „Generic/text only“ pa biramo karticu Ports i biramo istovrsni port sa drugim brojem npr: Umjesto USB001 biramo USB002 pa Apply i OK, te ponovno dvoklik na pisač „Generic/text only“ i desni klik na dokument Test Page u bijelom prozorčiću i biramo Restart. Postupak ponavljamo sa svim Portovima tog tipa dok ne dobijemo ispis testne stranice. Kad dobijemo ispis stranice znači da smo odabrali odgovarajući port i pisač je pravilno instaliran.