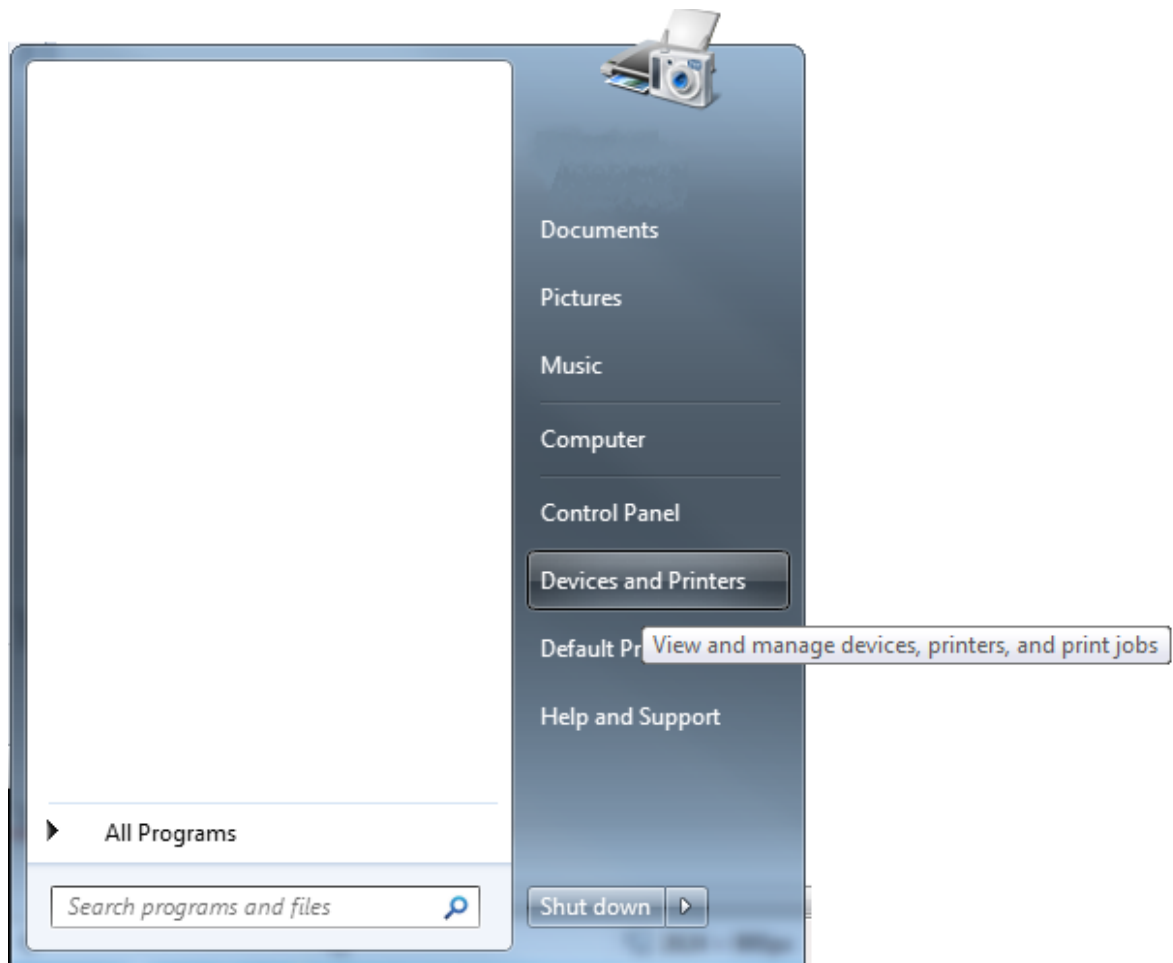
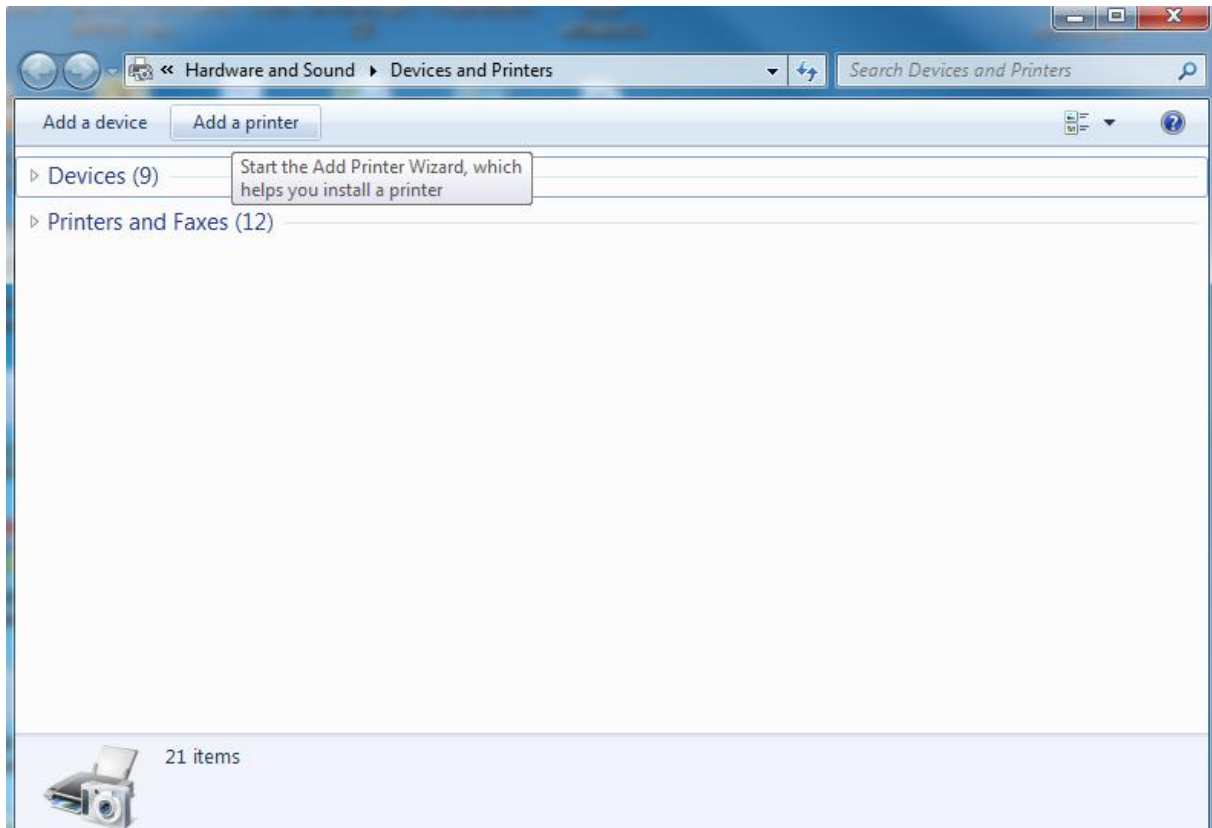


Instalacija pisača kao „Generic /text only“ pisača u Windows7 operativnom sustavu:

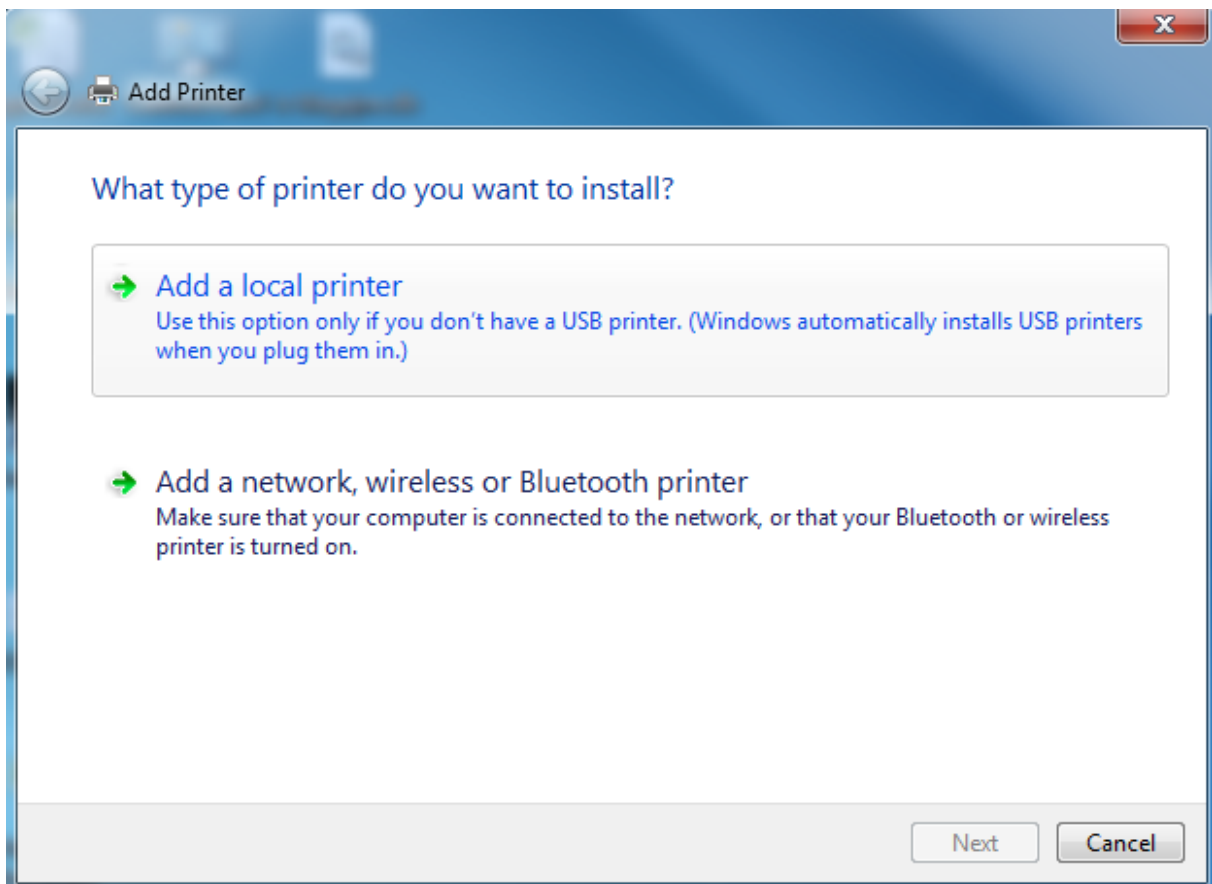
Odaberemo Devices and Printers iz izbornika „START“



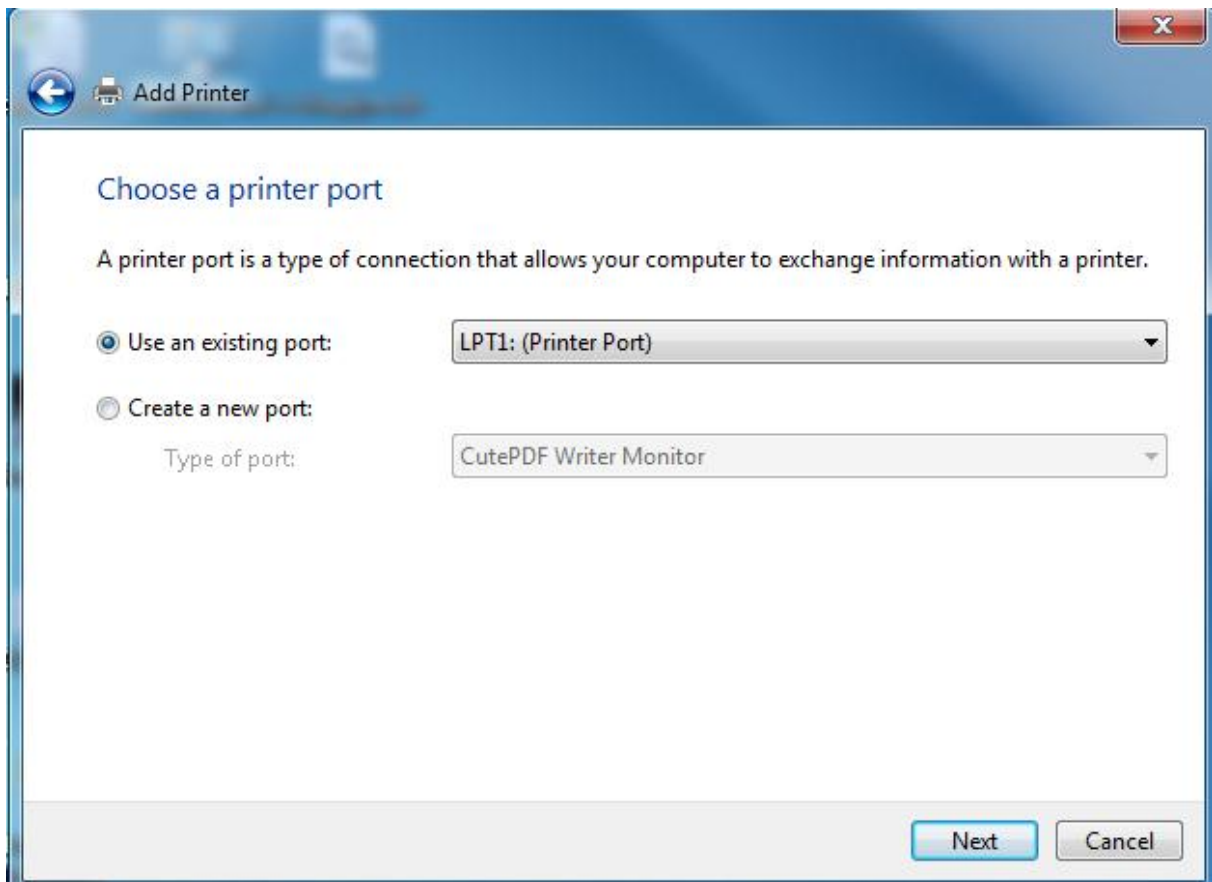
U sljedećem izborniku odaberemo opciju Add a printer:



Zatim Add a local printer



Kliknemo next i otvara se dijalog za odabir porta:



Ukoliko se radi o pisaču spojenom preko paralelnog porta, onda biramo „Use an existing port: LPT1:(printer port). Ukoliko se radi o USB pisaču onda biramo jedan od ponuđenih USB portova na koji je pisač spojen. Za pisač spojen preko serijskog porta, biramo COM1 ili odgovarajući COM port na koji je pisač spojen.

Portovi na računalu na koje se spaja printer i njihova oznaka:

LPT



COM

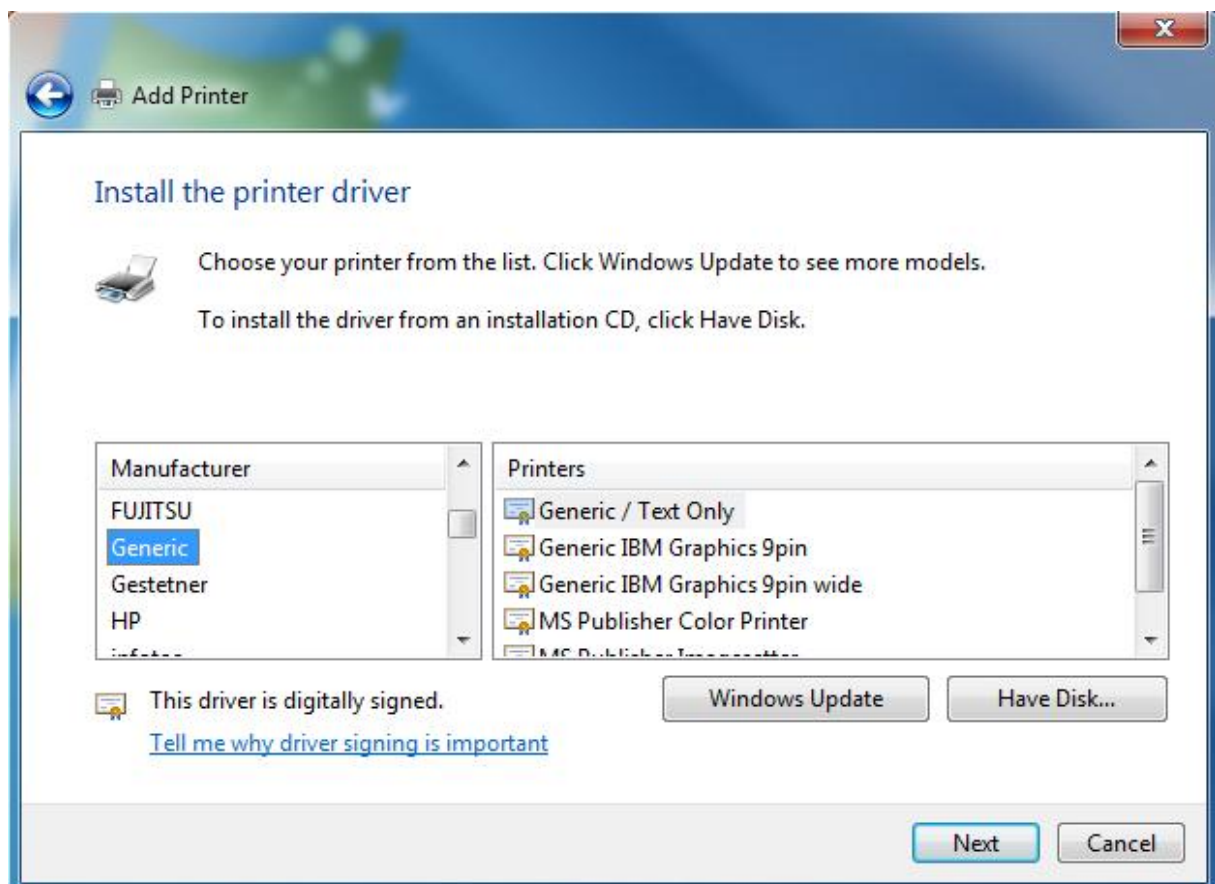


USB



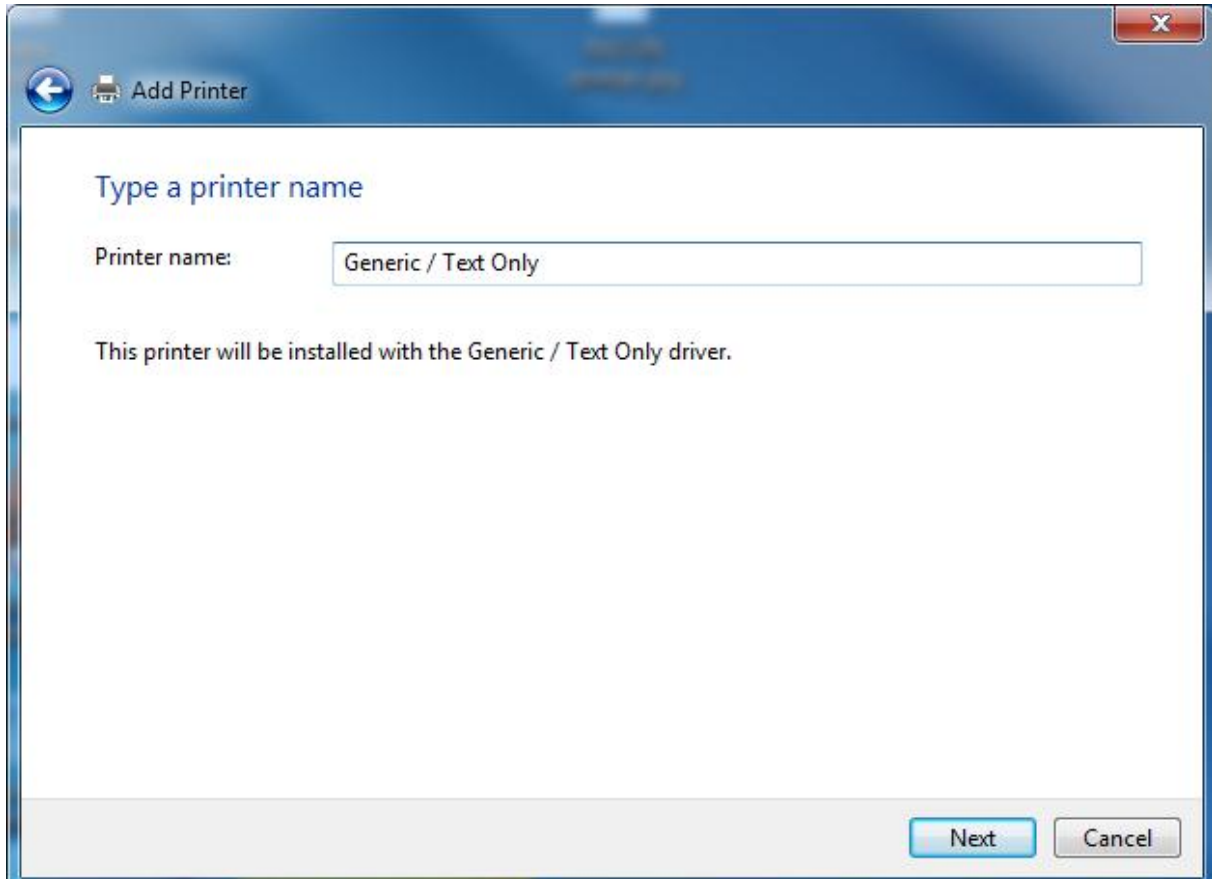
Ovisno o načinu priključivanja printera na računalo moramo prilikom instalacije pisača odabrati vrstu priključka prema slikama i nazivima porta.

Nakon toga Kliknemo Next i dobijemo novi dijalog:

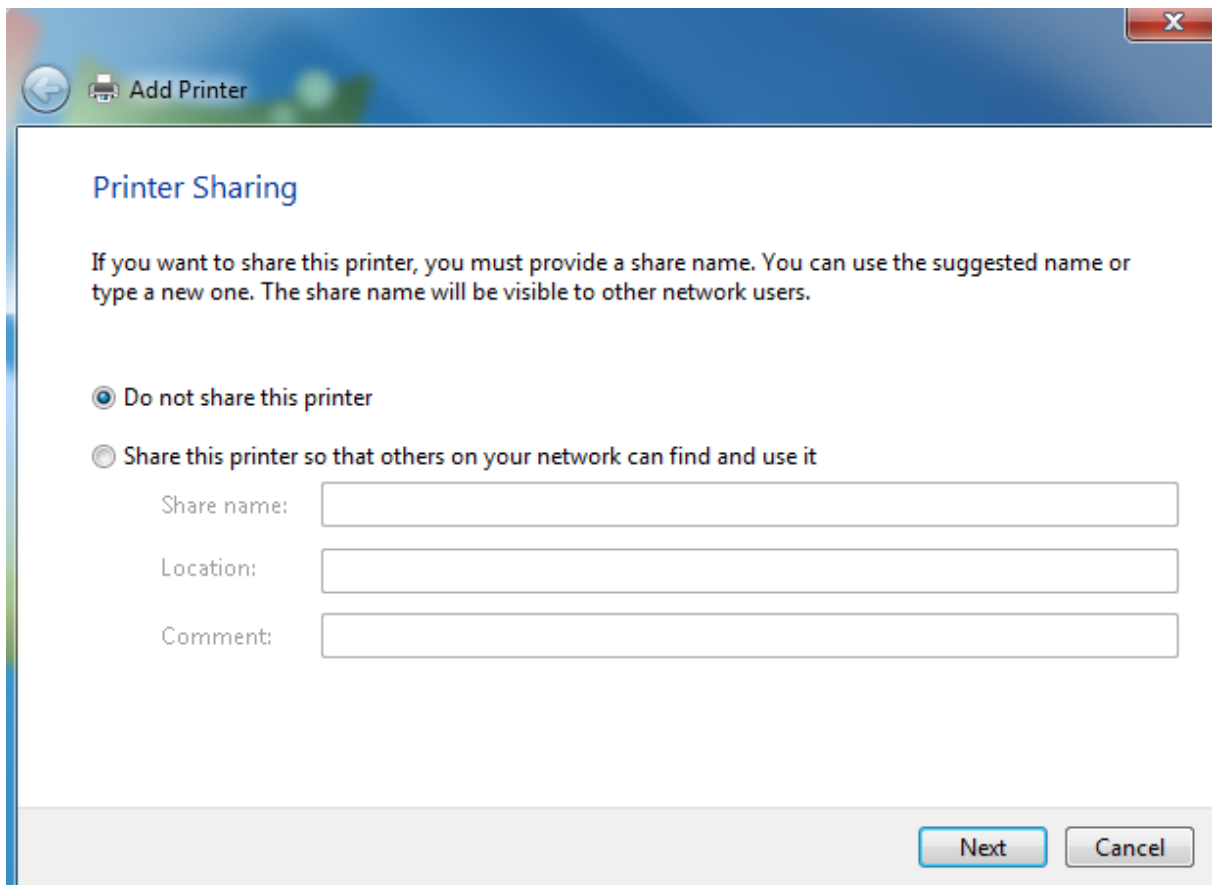


Pod Manufacturer odaberemo Generic i pod Printers Generic / Text only pa Next.

Otvora se izbor naziva pisaača, tu ostavljamo Generic/text only i kliknemo Next.

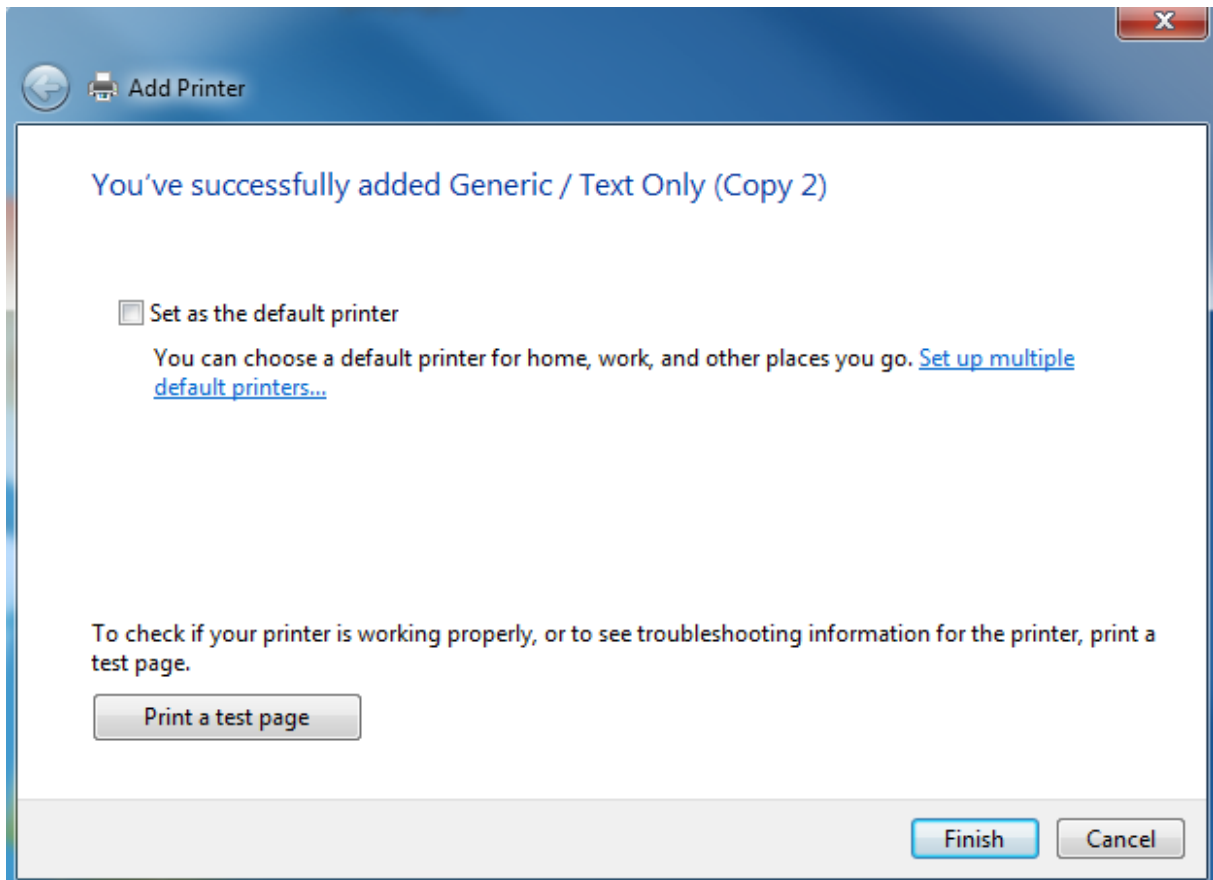


The screenshot shows the 'Add Printer' wizard window. The title bar contains a back arrow, a printer icon, and the text 'Add Printer'. The main content area has a blue header with the text 'Type a printer name'. Below this, there is a label 'Printer name:' followed by a text input field containing 'Generic / Text Only'. Underneath the input field, there is a line of text: 'This printer will be installed with the Generic / Text Only driver.' At the bottom right of the window, there are two buttons: 'Next' (highlighted in blue) and 'Cancel'.



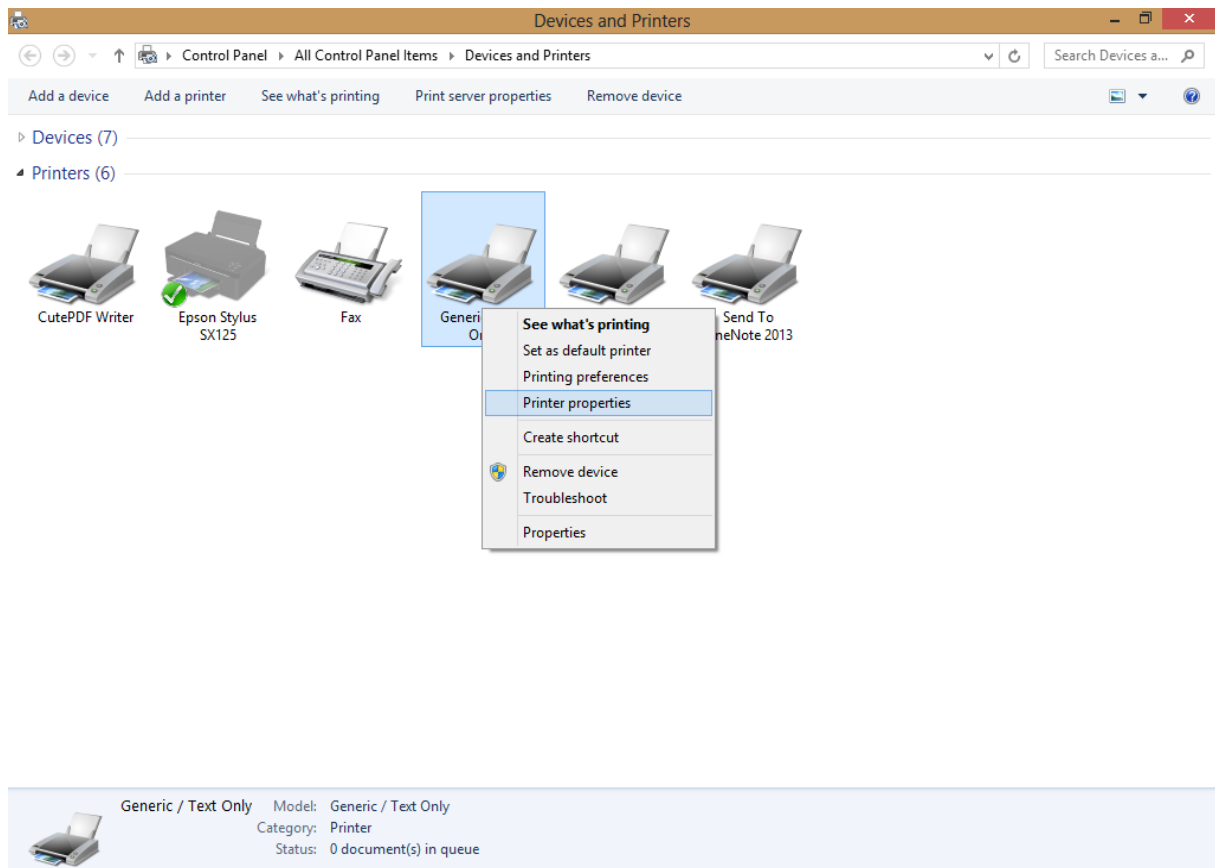
The screenshot shows the 'Add Printer' wizard window at the 'Printer Sharing' step. The title bar contains a back arrow, a printer icon, and the text 'Add Printer'. The main content area has a blue header with the text 'Printer Sharing'. Below this, there is a paragraph of text: 'If you want to share this printer, you must provide a share name. You can use the suggested name or type a new one. The share name will be visible to other network users.' There are two radio button options: 'Do not share this printer' (which is selected) and 'Share this printer so that others on your network can find and use it'. Below the second option, there are three text input fields labeled 'Share name:', 'Location:', and 'Comment:'. At the bottom right of the window, there are two buttons: 'Next' (highlighted in blue) and 'Cancel'.

Ostavimo „Do not share this printer“ i kliknemo Next, pa nakon toga na sljedećem ekranu print test page pa, ukoliko je pisač ispisao windows testnu stranicu, Finish :

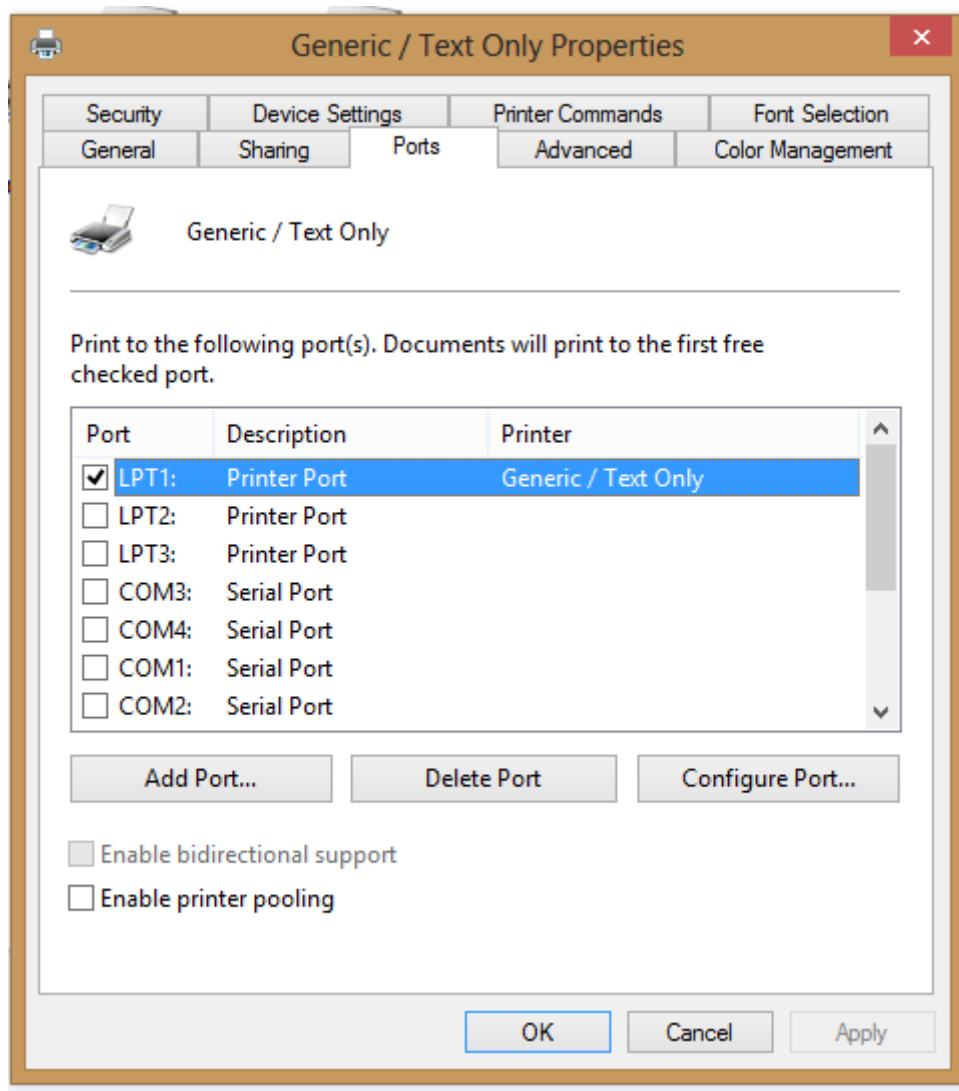


Ukoliko pisač nije ispisao testnu stranicu koristimo sljedeću proceduru:

-Desni klik na pisač Generic/text only i odaberemo Printer properties.



U novom prozoru biramo karticu Ports i pokušamo odabrati kvačicom istovrsni port sa drugim brojem, npr. Umjesto LPT1 biramo LPT2 , potvrdimo sa Apply pa OK



Nakon toga dvoklikom na ikonicu pisača Generic /text only nam se otvori dijalog u kojem vidimo zadatke koji su poslani na pisač te desnim klikom na zadatak Test Page biramo opciju restart i čekamo da isprinta testnu stranicu. Postupak sa promjenom portova ponavljamo dok ne odaberemo port na kojem dobijemo ispis testne stranice na pisaču. Nakon ispisa pisač je uspješno instaliran.