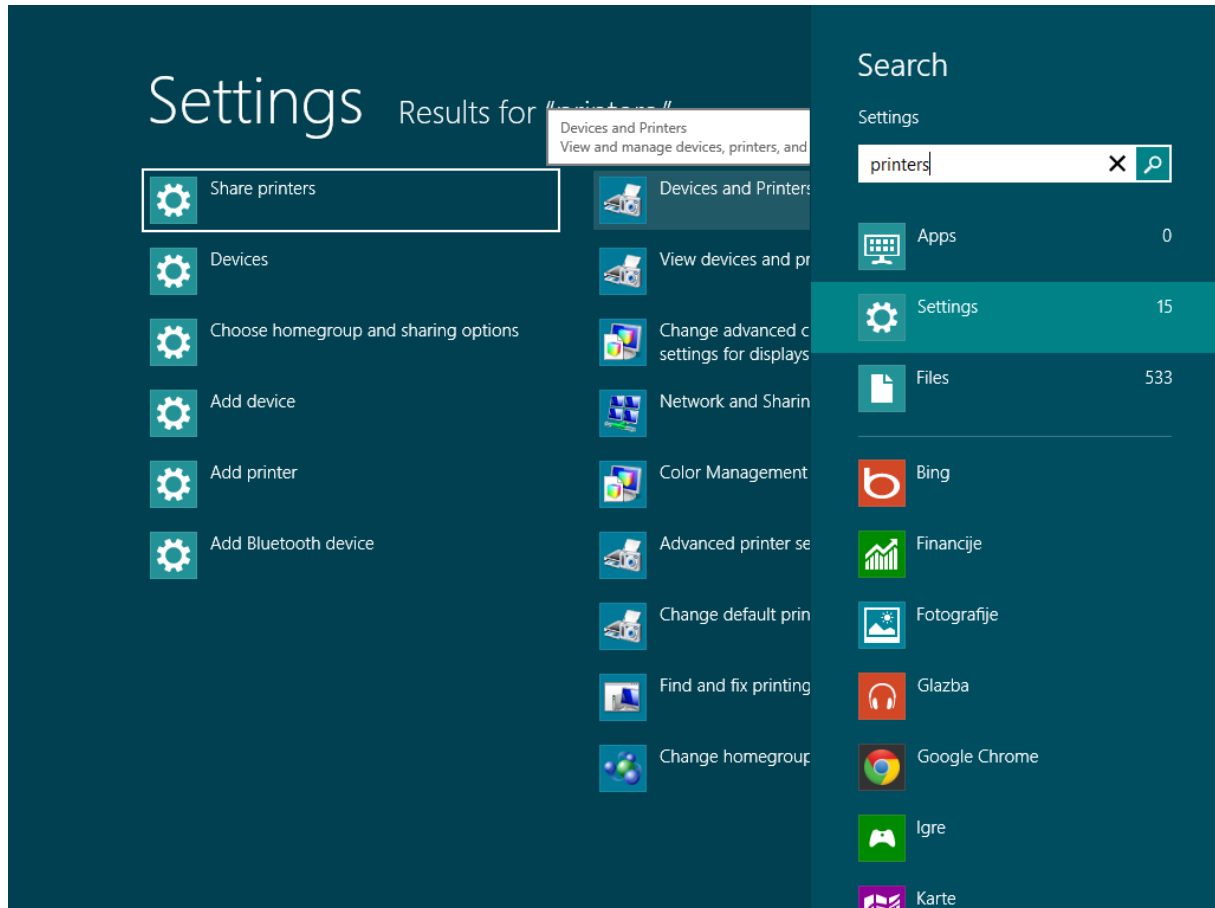


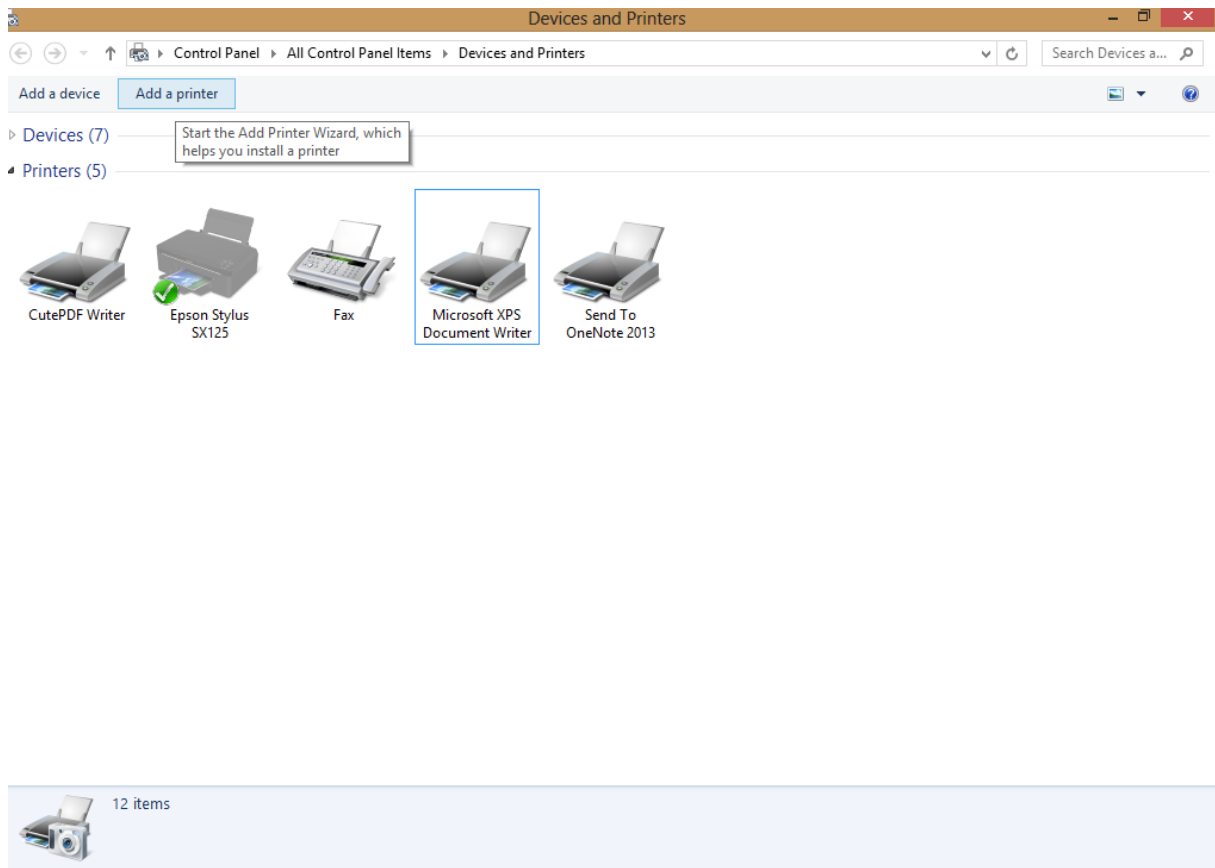
## Dodavanje pisača „Generic/text only“ u operativnom sustavu Windows 8

-Na početnom ekranu (tipka windows) započnemo upisivati printers, nakon toga pod Settings odaberemo opciju Devices and Printers.

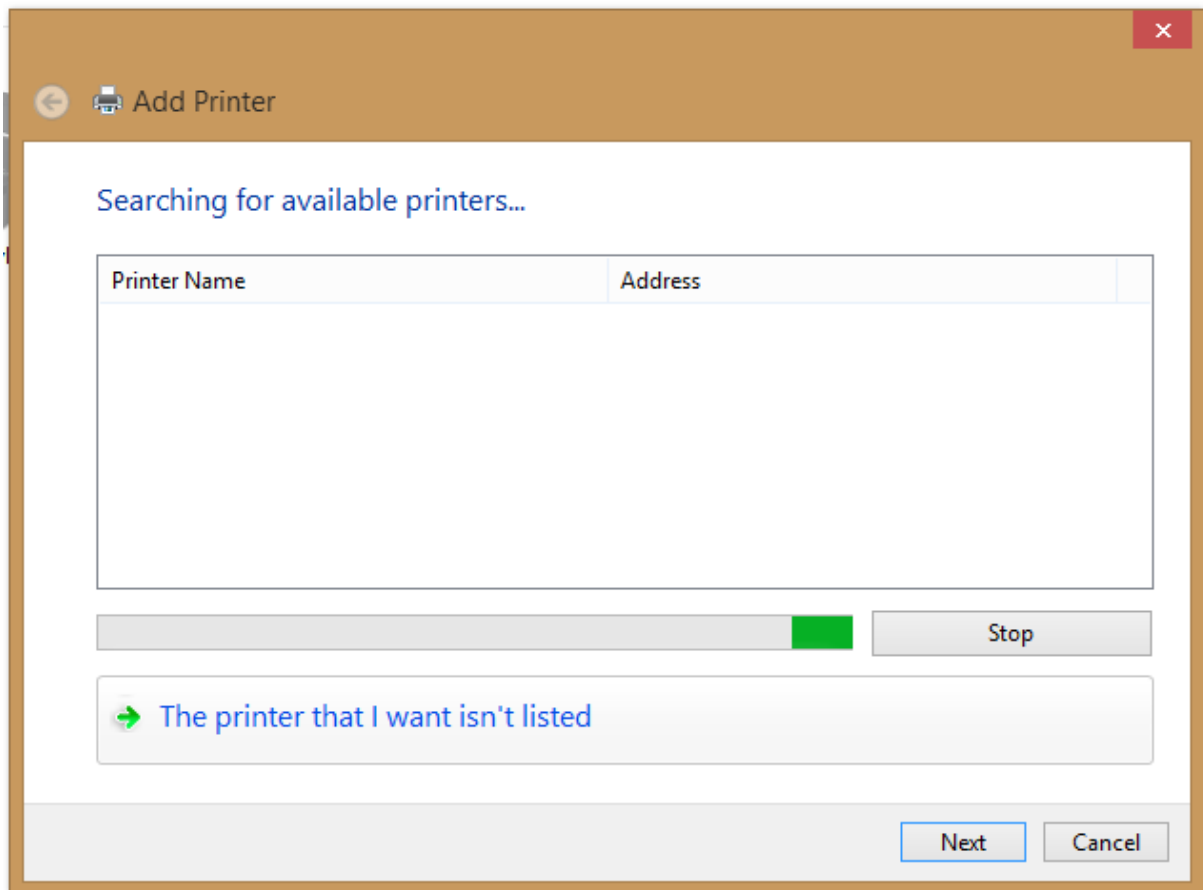


-Otvora nam se ekran na kojem su prikazani svi pisači koji su instalirani u Windowsima.

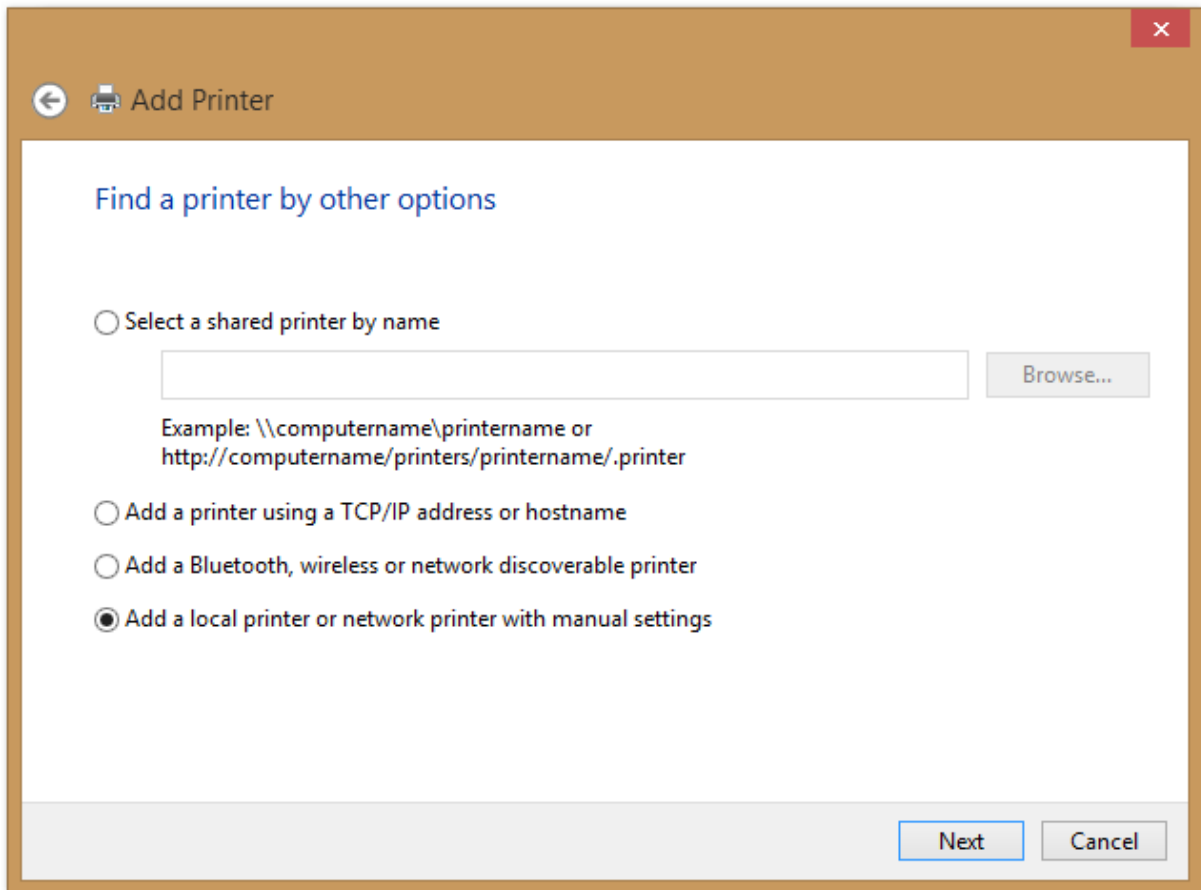
U gornjem lijevom kutu odaberemo opciju Add a printer.



-Otvora se novi ekran na kojem računalo automatski traži novi pisač. Zaustavimo automatsku pretragu klikom na opciju „The printer that I wan't isn't listed“ pa kliknemo next.



-Na sljedećem ekranu odabiremo opciju Add a local printer or network printer with manual settings, pa opet kliknemo next.



-Na sljedećem ekranu biramo sučelje na koje je pisač spojen. Ukoliko se radi o paralelnom portu, biramo LPT, ukoliko se radi o serijskom biramo COM a ako se radi o USB portu biramo USB.

Izgled priključaka na računalu ovisno o tipu priključka:

LPT



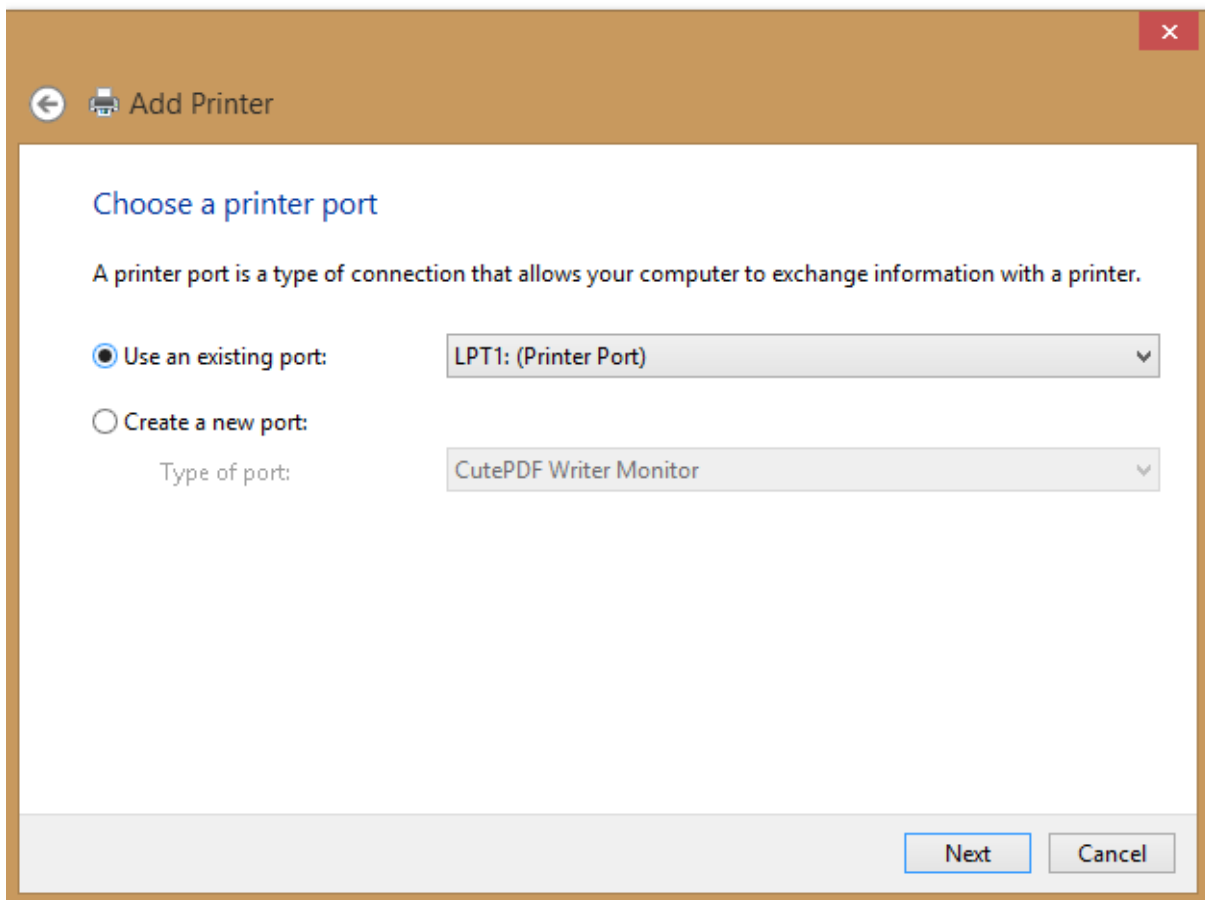
COM



USB

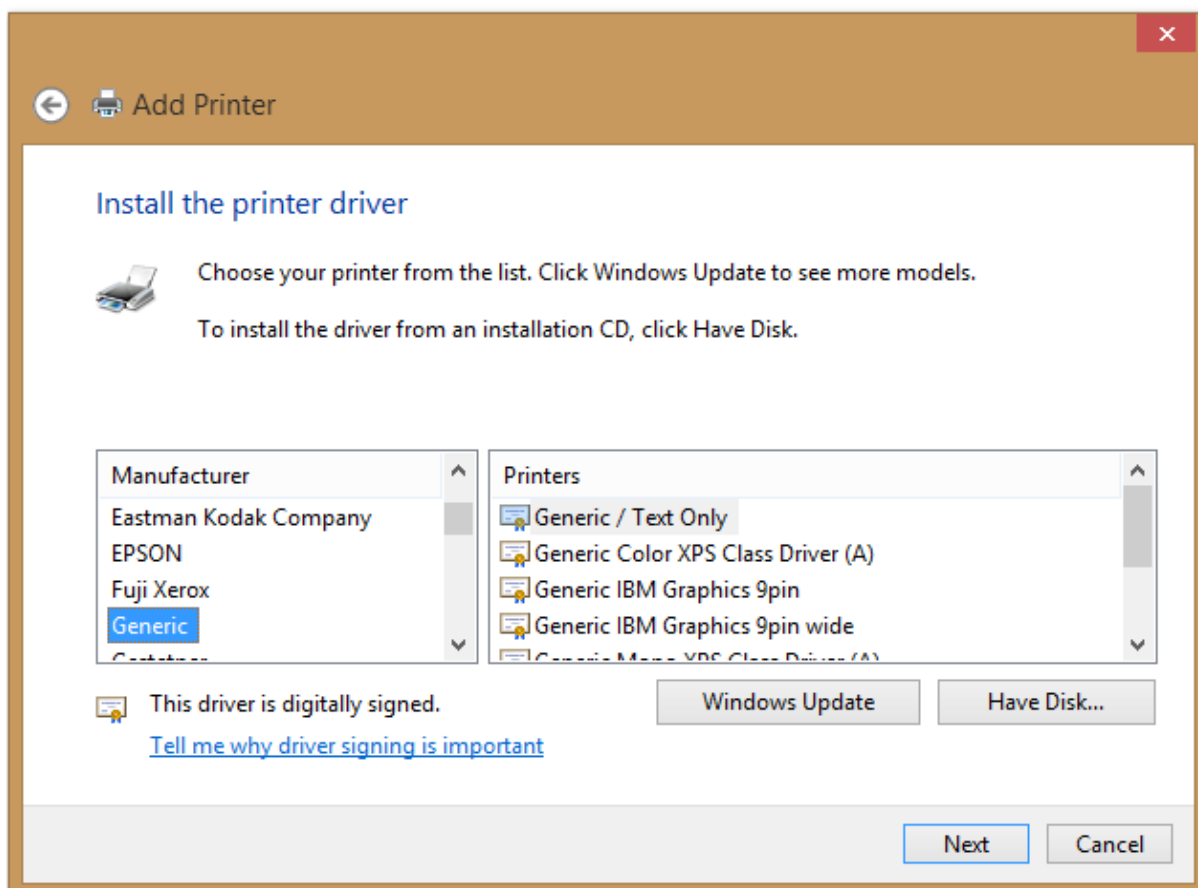


Ovisno o načinu priključivanja printera na računalo moramo prilikom instalacije pisača odabrati vrstu priključka prema slikama i nazivima porta.

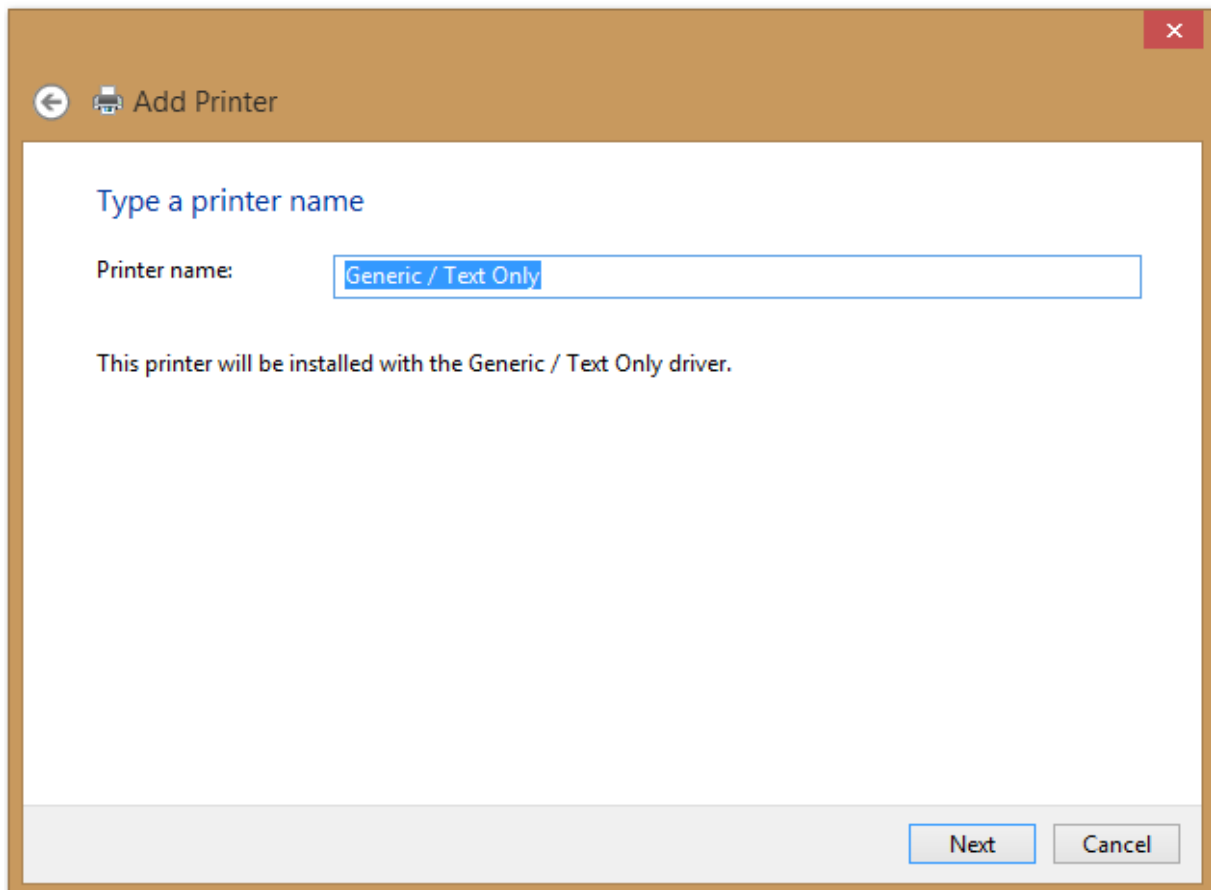


The screenshot shows a Windows dialog box titled "Add Printer" with a back arrow icon. The main heading is "Choose a printer port". Below this, there is a descriptive sentence: "A printer port is a type of connection that allows your computer to exchange information with a printer." There are two radio button options: "Use an existing port:" (which is selected) and "Create a new port:". To the right of the selected option is a dropdown menu showing "LPT1: (Printer Port)". Below the "Create a new port:" option is a label "Type of port:" followed by another dropdown menu showing "CutePDF Writer Monitor". At the bottom right of the dialog, there are two buttons: "Next" and "Cancel".

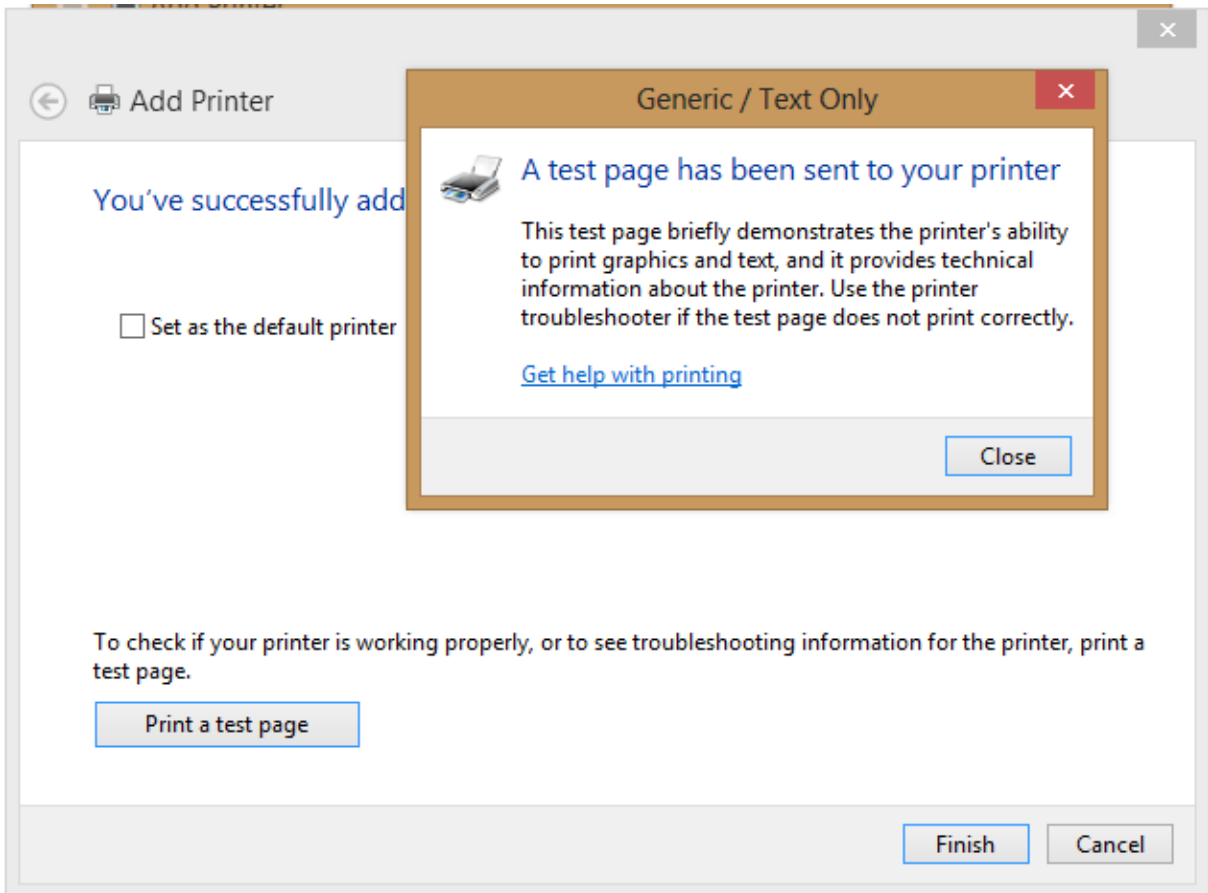
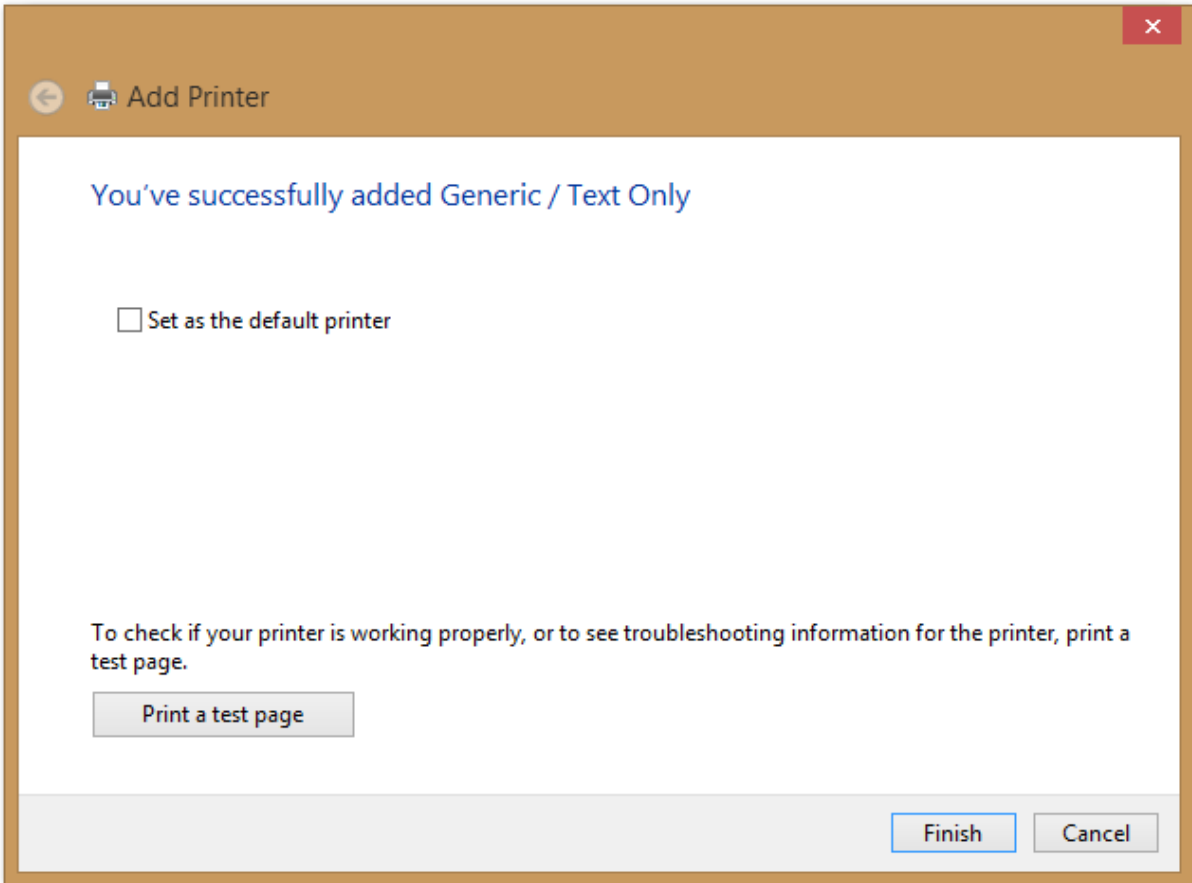
-Nakon toga se otvara novi dijalog u kojem možemo izabrati proizvođača i tip pisača. Pod Manufacturer biramo: Generic , a pod Printers: Generic/Text Only i kliknemo next.



Pod „Printer name“ ostavimo Generic/text only i kliknemo next.

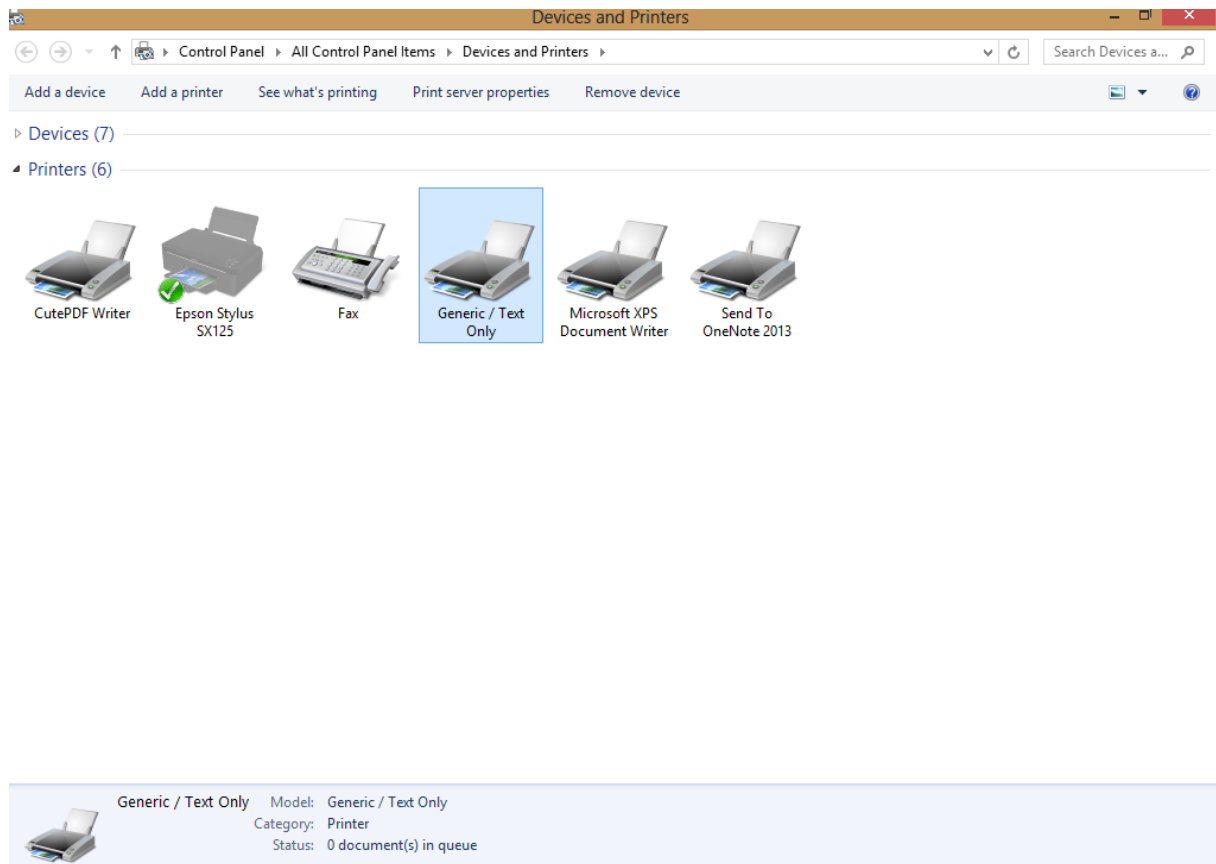


-Na sljedećem ekranu maknemo kvačicu sa „Set as default printer“ odaberemo Print a test page i nakon toga finish. Pojavi se poruka da je testna stranica poslana na pisač, i ukoliko pisač ispiše testnu stranicu, znači da smo ga uspješno instalirali.



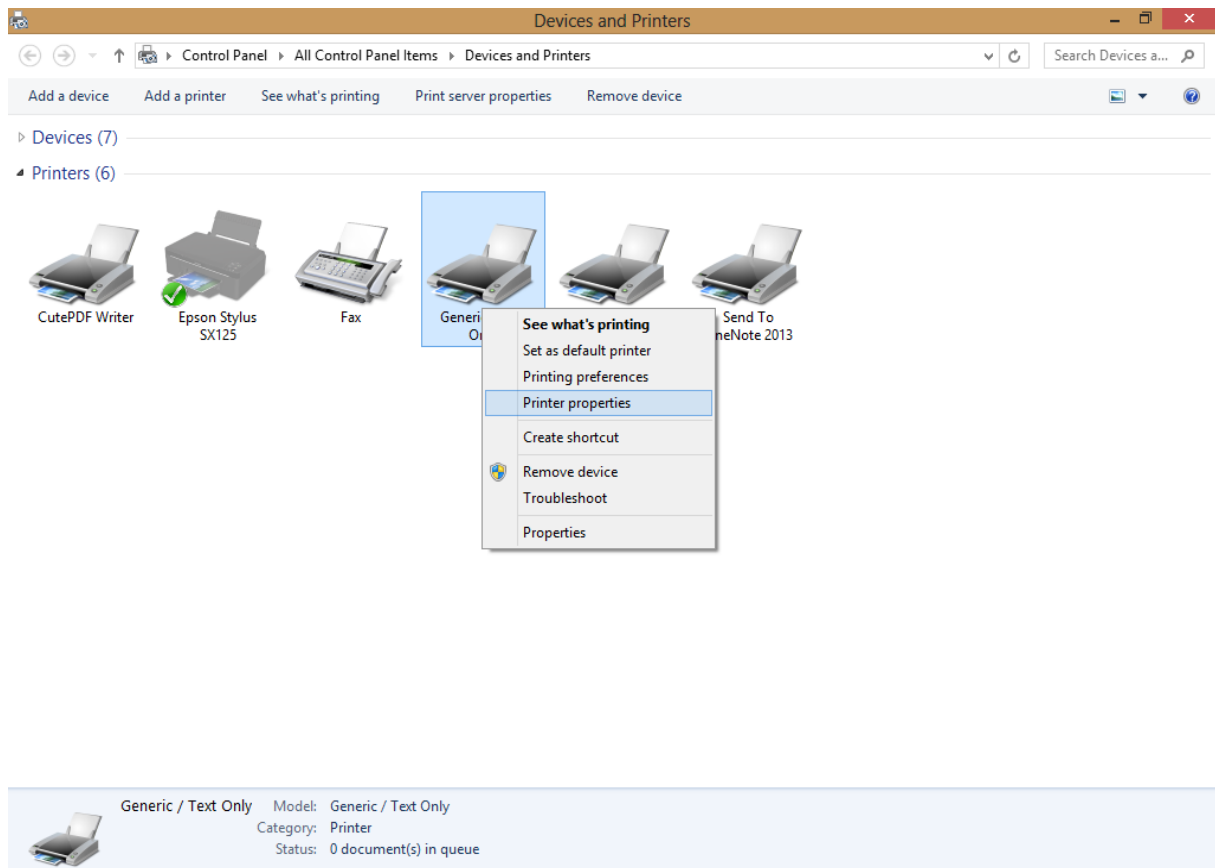


Kliknemo na close pa Finish.

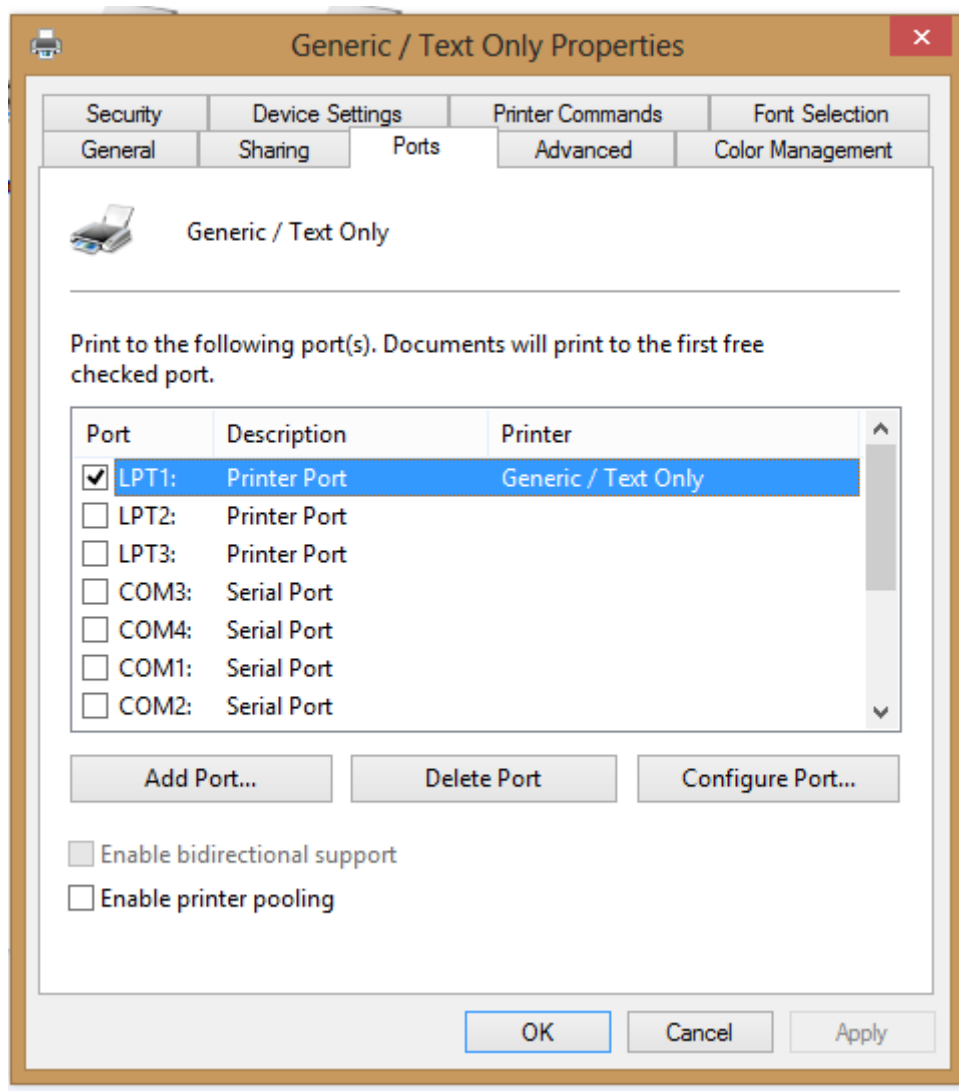


Ukoliko pisač nije ispisao poslanu testnu stranicu, radimo sljedeću proceduru:

-Desni klik na pisač Generic/text only i odaberemo Printer properties.



U novom prozoru biramo karticu Ports i pokušamo odabrati kvačicom istovrsni port sa drugim brojem, npr. Umjesto LPT1 biramo LPT2 , potvrdimo sa Apply pa OK



Nakon toga dvoklikom na ikonicu pisača Generic /text only nam se otvori dijalog u kojem vidimo zadatke koji su poslani na pisač te desnim klikom na zadatak Test Page biramo opciju restart i čekamo da isprinta testnu stranicu. Postupak sa promjenom portova ponavljamo dok ne odaberemo port na kojem dobijemo ispis testne stranice na pisaču. Nakon ispisa pisač je uspješno instaliran.